

# FLOW METER

## Model **A, C, D**



Model A



Model C



Model D

Variable area flow meter models A, C, and D are clear, easy to read acrylic flow meters. They are reliable instruments for measuring and monitoring liquid and gas flows.

### FEATURES

- Machined acrylic body
- Clear, easy to read scale

### TYPICAL APPLICATIONS

- Water treatment
- Sealing water measurements
- Gas flow measurements

### OPTIONS

- Scale for alternative liquids and gases
- Special scale markings
- Thread adapters

INGENIERIA SCANDIMEX LIMITADA  
Av. Lib. B. O'Higgins 240, Of.81, Stgo. - Chile  
Tel.: (56-2) 222 15 76 Fax: (56-2) 222 27 45  
info@scandimex.cl // www.scandimex.cl



## Technical data A

Connections

BSP 3/8", Thread adapters must be used for NPT-connections

Weight

190 g

Body

Acrylic (PMMA)

Max. pressure

20 bar (30 bar/30 °C)

Max. temperature

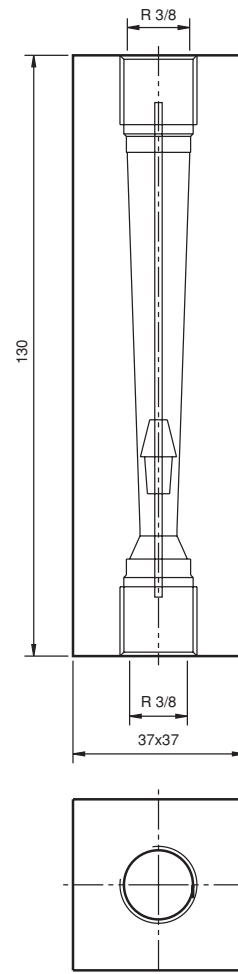
75 °C

Accuracy

± 5 % F.S (H<sub>2</sub>O, 20 °C)

# A

A-		
	<b>Scale</b>	
	A	H <sub>2</sub> O (l/min) at +20°C
R	Air (NI/min) at +20°C / 101,3 kPa	
<b>Flow range</b>		
	<b>H<sub>2</sub>O</b>	<b>Air</b>
2K	2 - 20 ml/min	0,1 - 0,9 NI/min
2A	4 - 34 ml/min	0,1 - 1,3 NI/min
2B	5 - 60 ml/min	0,2 - 2 NI/min
2C	10 - 95 ml/min	0,4 - 2,8 NI/min
3K	0,01 - 0,13 l/min	0,5 - 6,5 NI/min
3A	0,02 - 0,22 l/min	0,5 - 8 NI/min
3B	0,02 - 0,36 l/min	1 - 11 NI/min
3C	0,05 - 0,5 l/min	1 - 14 NI/min
8M	0,1 - 1,1 l/min	4 - 30 NI/min
8P	0,2 - 1,8 l/min	5 - 50 NI/min
8S	0,2 - 2,6 l/min	5 - 75 NI/min
8R	0,25 - 3 l/min	10 - 90 NI/min
5A	0,5 - 5 l/min	10 - 150 NI/min
8D	0,5 - 6,5 l/min	20 - 220 NI/min



Note, thread adapters must be used for NPT-connections

MANUFACTURER

**Kytola**  
INSTRUMENTS

KYTOLA OY • Olli Kytolan tie 1  
P.O. Box 5 • FI-40951 MUURAME • FINLAND  
Phone +358 14 339 0600 • Fax +358 14 631 419

LOCAL REPRESENTATIVE

INGENIERIA SCANDIMEX LIMITADA  
Av. Lib. B. O'Higgins 240, Of.81, Stgo. - Chile  
Tel.: (56-2) 222 15 76 Fax: (56-2) 222 27 45  
info@scandimex.cl // www.scandimex.cl